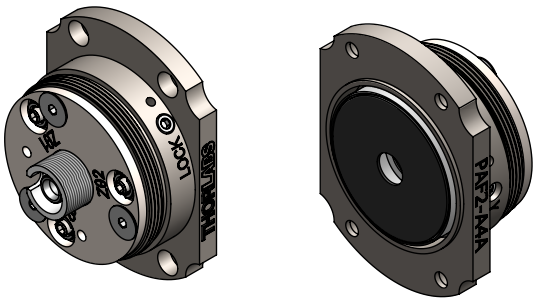
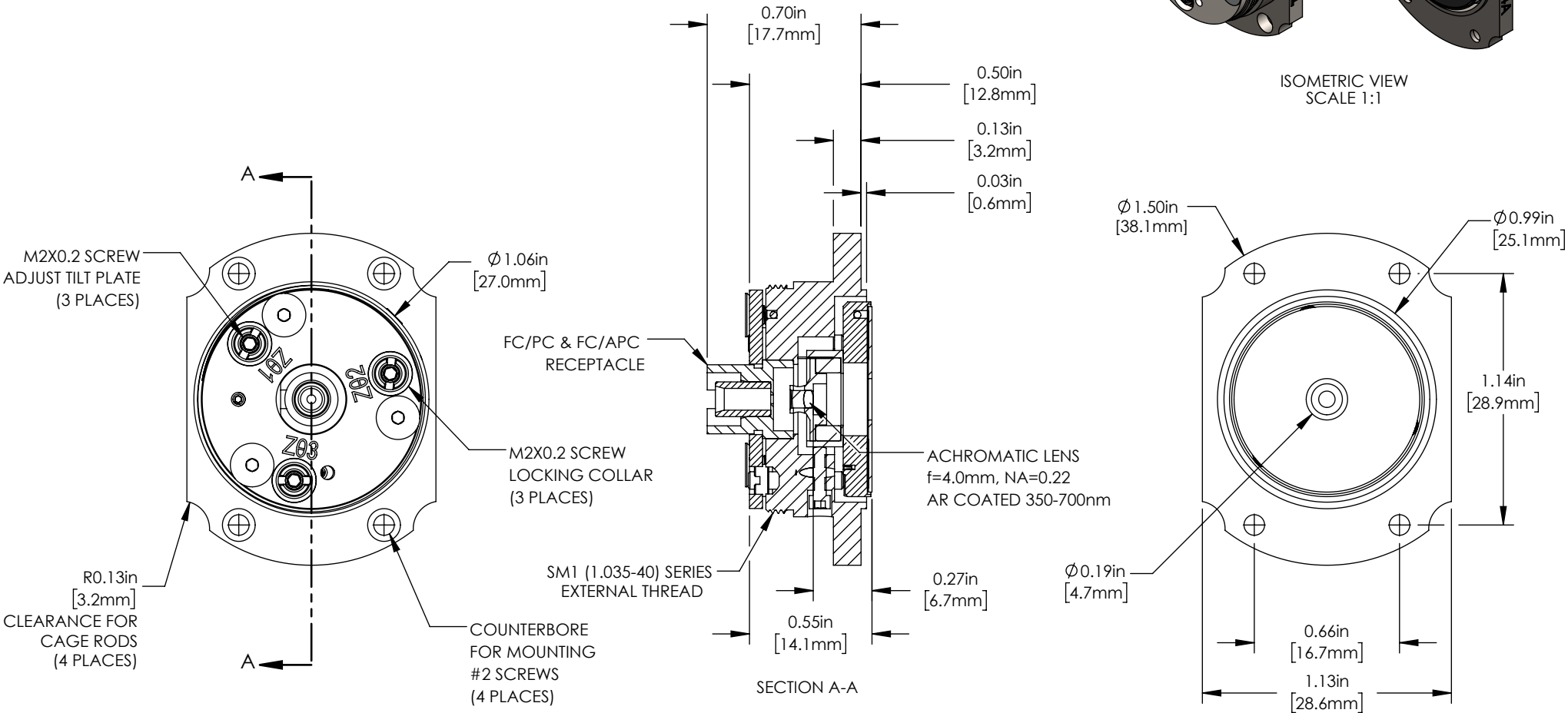


| SPECIFICATIONS              |   |                     |             |                      |
|-----------------------------|---|---------------------|-------------|----------------------|
| INPUT MFD FROM 460HP FIBER* | OUTPUT 1/e <sup>2</sup> WAIST DIAMETER* | MAX WAIST DISTANCE* | DIVERGENCE* | LENS CLEAR APERATURE |
| 3.5 $\mu$ m                 | 0.65 mm                                 | 378 mm              | 0.875 mrad  | 1.8 mm               |

\*CALCULATED USING 450nm WAVELENGTH



ISOMETRIC VIEW  
SCALE 1:1



NOTES:  
FIBERPORT IS FACTORY ALIGNED FOR APPROX. COLLIMATION AT 488nm.

- INCLUDED BUT NOT SHOWN:
- DUST CAP
  - 0.028" HEX KEY
  - 0.050" HEX KEY
  - 0-80 LOCKING SCREW
  - SPW403 SPANNER FOR LOCKING COLLARS

FOR INFORMATION ONLY  
NOT FOR MANUFACTURING PURPOSES

|   |      |          |  |               |
|---|------|----------|--|---------------|
| DRAWING PROJECTION  |      |          | <div>THORLABS</div> <div>www.thorlabs.com</div>                      |               |
|   | NAME | DATE     |  |               |
| DRAWN   | JB   | 09/08/17 | FIBERPORT, FC/PC & APC, f=4.0 mm, 350 - 700 nm, $\phi$ 0.65 mm WAIST |               |
| APPROVAL  | PH   | 02/14/20 | MATERIAL   |               |
| COPYRIGHT © 2020 BY THORLABS  |      |          | N/A  |               |
| VALUES IN PARENTHESIS ARE CALCULATED AND MAY CONTAIN ROUND OFF ERRORS |      |          | ITEM #   | APPROX WEIGHT |
|   |      |          | PAF2-A4A   | 0.09 kg       |