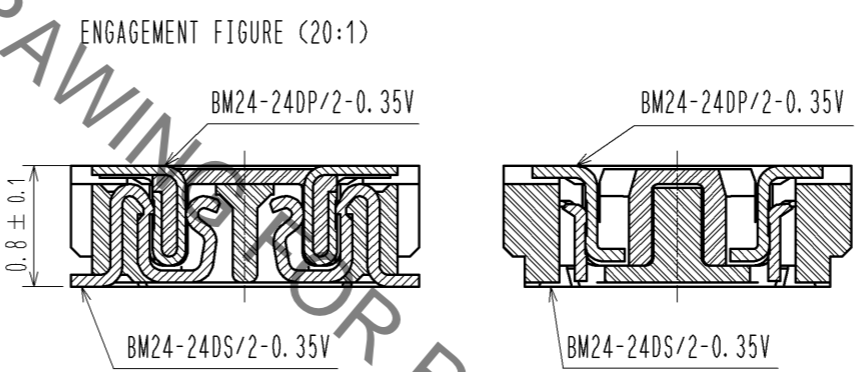
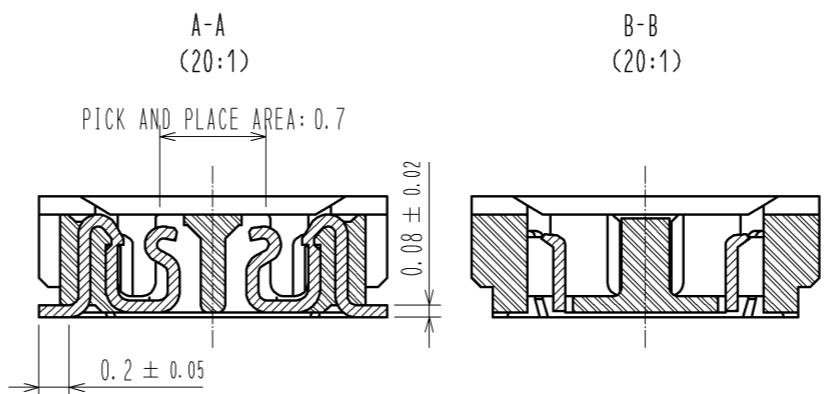
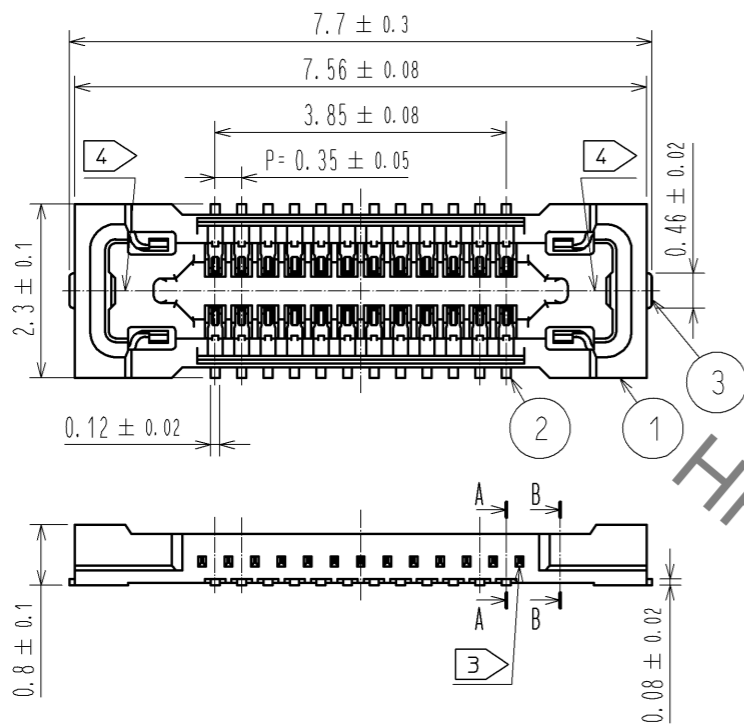
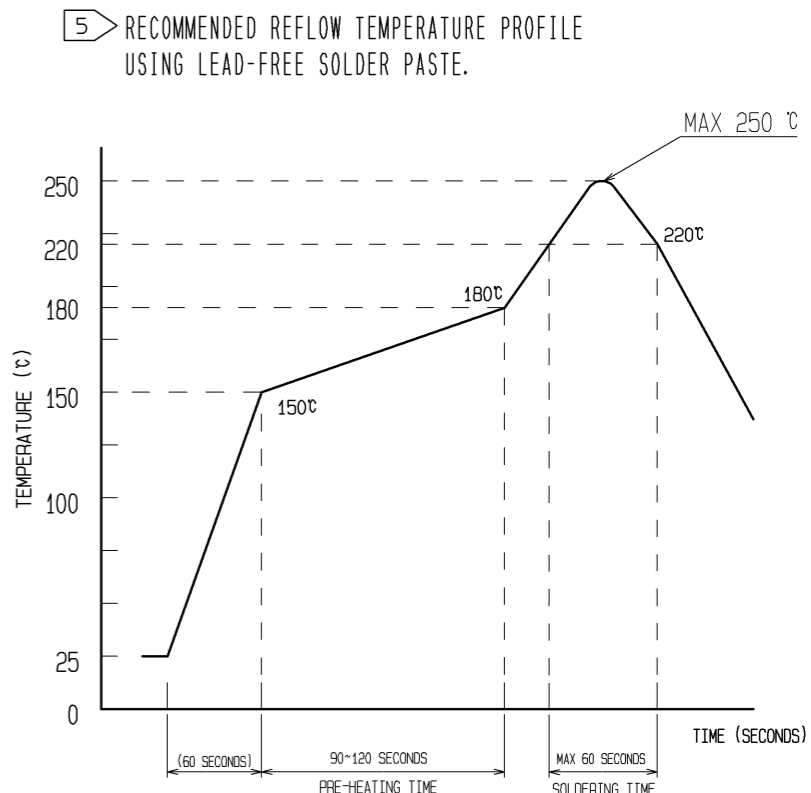


Jan.1.2022 Copyright 2022 HIROSE ELECTRIC CO., LTD. All Rights Reserved.
In case of consideration for using Automotive equipment / device which demand high reliability, kindly contact our sales window correspondents.



- NOTE 1 . ALL LEAD CO-PLANARITY SHALL BE 0.08mm MAX.
- 2 CONTACT PLATING SPECIFICATIONS
CONTACT AREA : GOLD 0.05 μm MIN
SMT LEAD : GOLD 0.05 μm MIN
UNDER PLATING : NICKEL 1 μm MIN
(SURFACE : SEALING)
 - 3 A PART OF THE WALL COULD BE NOTCHED.
 - 4 HRS MARK AND CAV No. ARE INDICATED IN APPROX. POSITION SHOWN.



REFLOW METHOD: IR REFLOW
NUMBER OF REFLOW CYCLES: 2 CYCLES MAX.

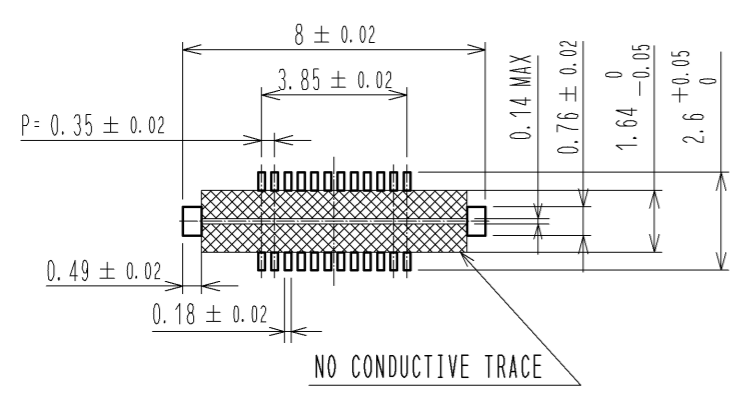
1) REFLOW TIME
DURATION ABOVE 220°C, 60 SEC MAX.
(PEAK TEMPERATURE: 250°C MAX)

2) PRE-HEAT TIME
PRE-HEAT TEMPERATURE(MIN): 150°C
PRE-HEAT TEMPERATURE(MAX): 180°C
PRE-HEAT TIME: 90-120 SEC.

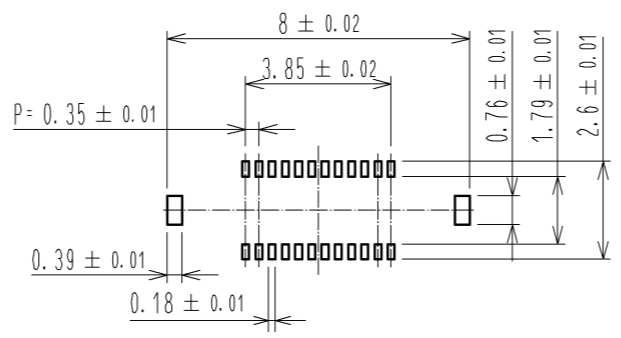
5 THIS TEMPERATURE PROFILE IS PER THE CONDITIONS SHOWN ABOVE. ADDITIONAL FACTORS, SUCH AS SOLDER PASTE TYPE, PCB SIZE AND OTHER MOUNTED COMPONENTS COULD AFFECT THE PROFILE, THEREFORE, A THOROUGH EVALUATION OF MOUNTING COONDITION IS REQUIRED PRIOR TO PRODUCTION. TEPERATURE IS MEASURED AT CONTACT LEAD.

6. PLEASE CONTACT US IN CASE YOU WILL MAKE DIFFERENT SETTINGS FROM OUR RECOMMENDATION.

◆ RECOMMENDED PCB LAYOUT

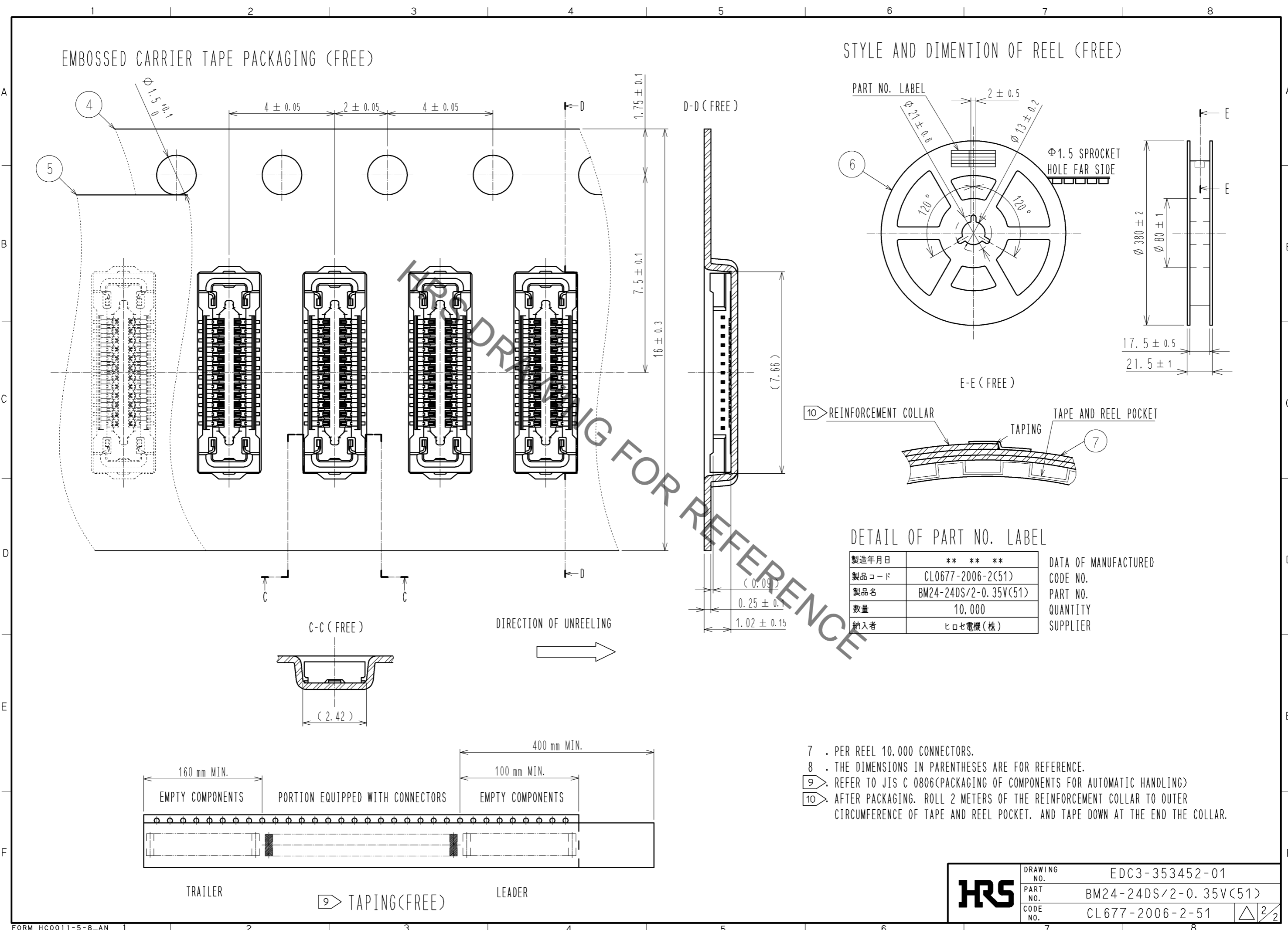


◆ RECOMMENDED METAL MASK DIMENSIONS
METAL MASK THICKNESS : 100 μm

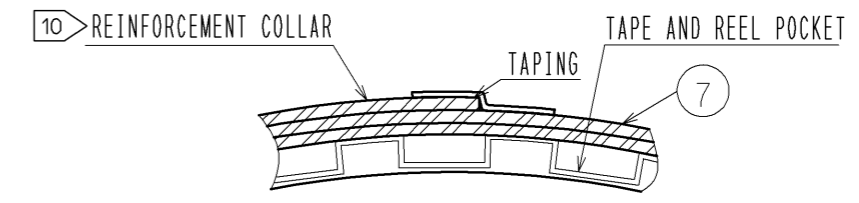
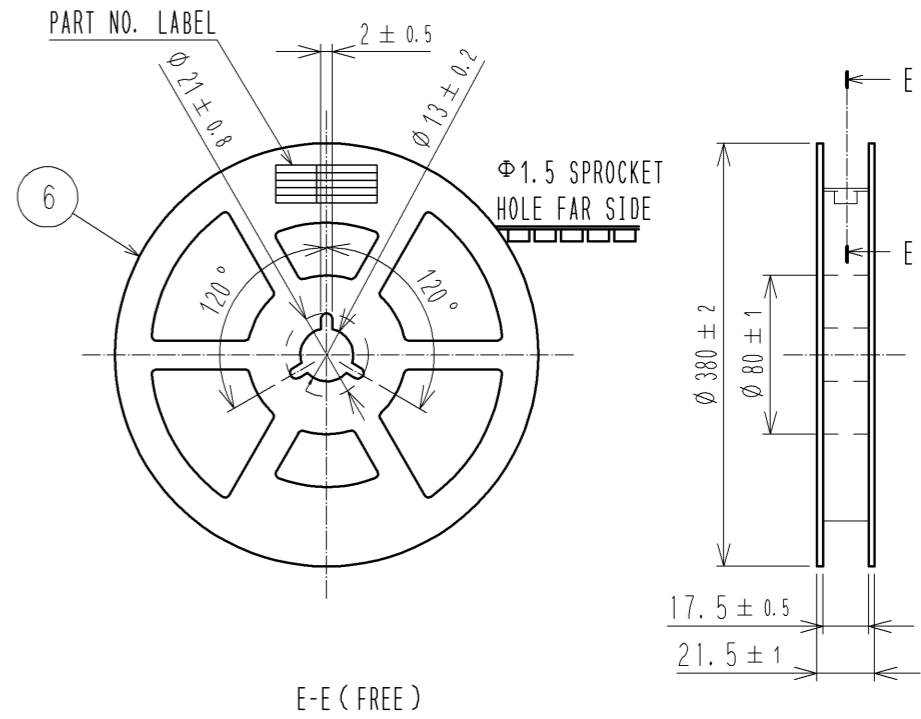


| | | | | | |
|--------------------------------------|--------------|------------------------------|------------|--------------------------|------------------------------|
| 4 | PS | CLEAR(EMBOSSED CARRIER TAPE) | | | |
| 3 | COPPER ALLOY | | 7 | PS | CLEAR (REINFORCEMENT COLLAR) |
| 2 | COPPER ALLOY | | 6 | PS | BLACK (PLASTIC REEL) |
| 1 | LCP | UL94 V-0. BLACK | 5 | POLYESTER | CLEAR (COVER TAPE) |
| NO. | MATERIAL | FINISH . REMARKS | NO. | MATERIAL | FINISH . REMARKS |
| UNITS mm | | SCALE 10 : 1 | COUNT | DESCRIPTION OF REVISIONS | DESIGNED |
| HRS HIROSE ELECTRIC CO., LTD. | | APPROVED : KH. IKEDA | 14. 04. 04 | DRAWING NO. | EDC3-353452-01 |
| | | CHECED : WR. FUKUCHI | 14. 04. 04 | PART NO. | BM24-24DS/2-0. 35V(51) |
| | | DESIGNED : YH. HASEGAWA | 14. 04. 04 | CODE NO. | CL677-2006-2-51 |
| | | DRAWN : YH. HASEGAWA | 14. 04. 04 | | |

Jan.1.2022 Copyright 2022 HIROSE ELECTRIC CO., LTD. All Rights Reserved.
 In case of consideration for using Automotive equipment / device which demand high reliability, kindly contact our sales window correspondents.



STYLE AND DIMENTION OF REEL (FREE)



DETAIL OF PART NO. LABEL

| | | |
|-------|-----------------------|----------------------|
| 製造年月日 | ** ** * | DATA OF MANUFACTURED |
| 製品コード | CL0677-2006-2(51) | CODE NO. |
| 製品名 | BM24-24DS/2-0.35V(51) | PART NO. |
| 数量 | 10,000 | QUANTITY |
| 納入者 | ヒロセ電機(株) | SUPPLIER |

- 7 . PER REEL 10,000 CONNECTORS.
- 8 . THE DIMENSIONS IN PARENTHESES ARE FOR REFERENCE.
- 9 . REFER TO JIS C 0806(PACKAGING OF COMPONENTS FOR AUTOMATIC HANDLING)
- 10 . AFTER PACKAGING. ROLL 2 METERS OF THE REINFORCEMENT COLLAR TO OUTER CIRCUMFERENCE OF TAPE AND REEL POCKET. AND TAPE DOWN AT THE END THE COLLAR.

| | | |
|------------|-------------|-----------------------|
| HRS | DRAWING NO. | EDC3-353452-01 |
| | PART NO. | BM24-24DS/2-0.35V(51) |
| | CODE NO. | CL677-2006-2-51 |
| | | △ 2/2 |

Mouser Electronics

Authorized Distributor

Click to View Pricing, Inventory, Delivery & Lifecycle Information:

[Hirose Electric:](#)

[BM24-24DS/2-0.35V\(51\)](#)