

U92 - M411 - 1X01 - 7X

OPTIONAL DUST COVER

0 - NO DUST COVER

D - WITH DUST COVER (SHIPPED BULK IN SAME BOX WITH CAGE & CONNECTOR ASSEMBLY)

MOUNTING SCREWS

0 - NO MOUNTING SCREWS SHIPPED

1 - WITH MOUNTING SCREWS M2 X 04 - 4.3 MM LONG SHIPPED BULK IN SAME TRAY WITH CAGE ASSEMBLIES

2 - WITH MOUNTING SCREWS M2 X 04 - 3.6 MM LONG SHIPPED BULK IN SAME TRAY WITH CAGE ASSEMBLIES

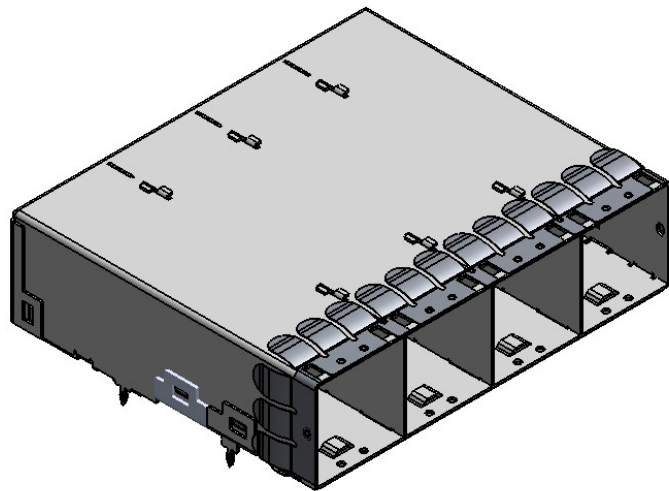
CONTACT PLATING

MATING AREA PLATING: 0.76 µm GOLD OVER 1.27 µm TO 3.81 µm OF NICKEL

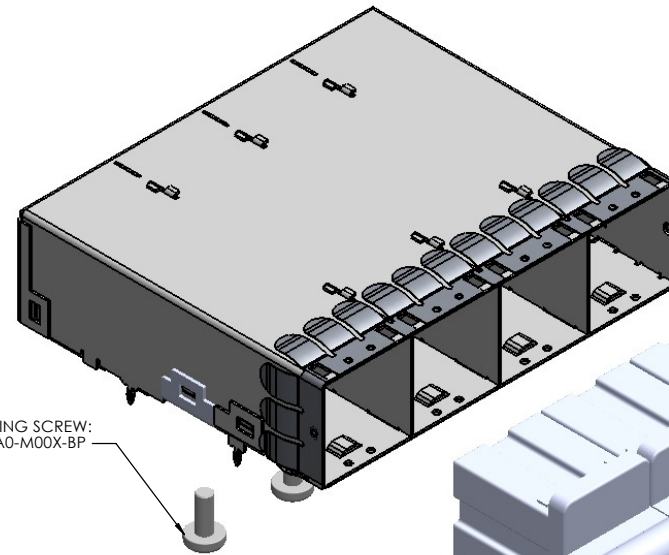
PRESS FIT TAIL AREA PLATING: 0.381 µm TO 1.52 µm OF MATTE TIN OVER 1.27 µm TO 3.81µm OF NICKEL

(RoHS COMPLIANT PER RoHS DIRECTIVE 2011/65/EU)

REVISIONS			
REV.	DESCRIPTION	DATE	APPROVED
A	PROPOSAL	OCT. 19/16	J.SI
B	CHANGED TO MEET THE SAS-4/PCIe-4	JUL. 12/17	J.SI
C	CORRECTED THE "DIM. A" IN PAGE 4	MAY. 9/18	J.SI
D	ADD KEEP OUT AREA IN THE FOOTPRINT	JUL. 6/18	J.SI
E	ADD NEW OPTION OF MOUNTING SCREW	MAY.13/22	J.SI



PART # **U92-M411-1001-70** SHOWN
(CAGE & CONNECTOR ASSEMBLY WITH
NO SCREWS AND NO DUST COVER SHIPPED)



PART # **U92-M411-1D01-71** SHOWN
(CAGE & CONNECTOR ASSEMBLY WITH
SCREWS AND DUST COVER SHIPPED BULK)

MOUNTING SCREW:
U92-21A0-M00X-BP

DUST COVER:
U92-2100-8000-BP

NOTES:

1) MATERIAL

MAIN CAGE: PHOSPHOR BRONZE WITH NICKEL PLATING

EMI FINGERS: PHOSPHOR BRONZE WITH NICKEL PLATING

MOUNTING SCREW: AISI 1010 STEEL

CONNECTOR HOUSING: LCP

CONTACTS: PHOSPHOR BRONZE, FOR PLATING INFO. SEE PART
NUMBER CONFIGURATION FOR OPTIONS.

2) PACKAGING:

TRAY PACKAGING



UNLESS OTHERWISE SPECIFIED:
DIMENSIONS ARE IN MILLIMETERS
TOLERANCES ARE:

DECIMALS ANGLES
.X ±0.25 X° ±1°
.XX ±0.13 X.X° ±0.5°



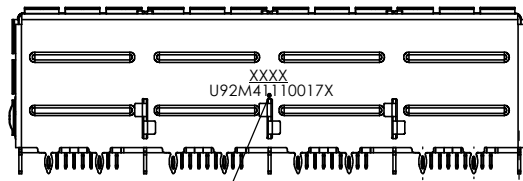
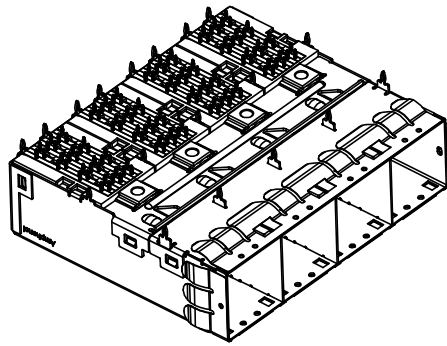
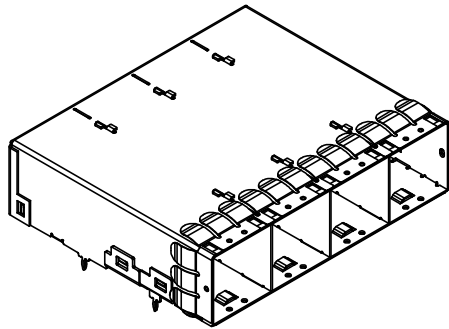
DO NOT SCALE DRAWING

APPROVAL	DATE
DESIGN: Mike.H	OCT 19/16
CHECKED: Chigow.X	OCT 19/16
QA APPR.	
ME APPR.	
DWG APPR.	J.SI OCT 19/16
ENG. REL. NO.	
NSCM:	

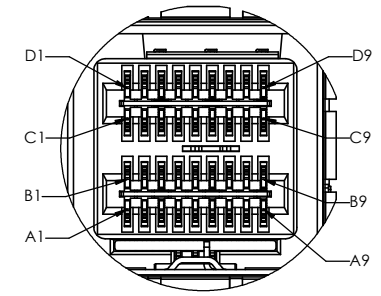
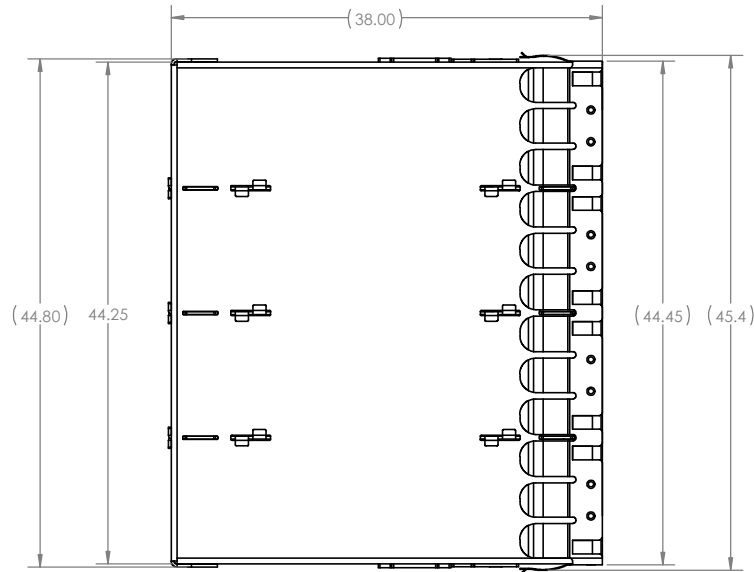
Amphenol High Speed Interconnects
A Division of Amphenol Corp. www.amphenol-highspeed.com

**24GBPS - 16X MINI SAS HD
CAGE AND CONNECTOR
4 PORT ASSEMBLY
WITH LONG EMI FINGERS**

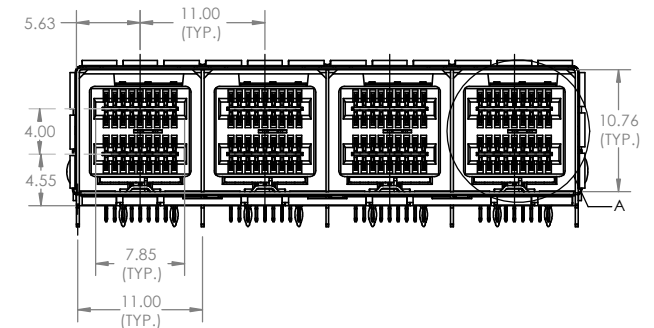
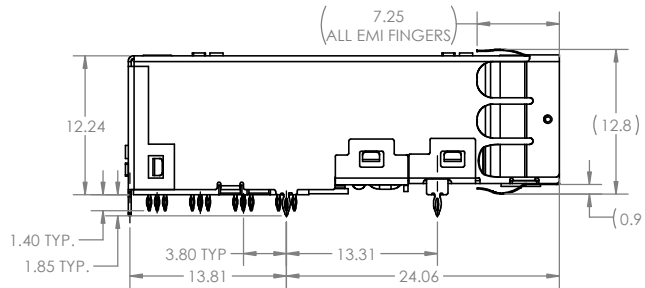
SIZE	DWG. NO.	REV
	P-U92-M411-1X01-7X	E
SCALE: 1:1	PROJECT: HD	SHEET 1 OF 4



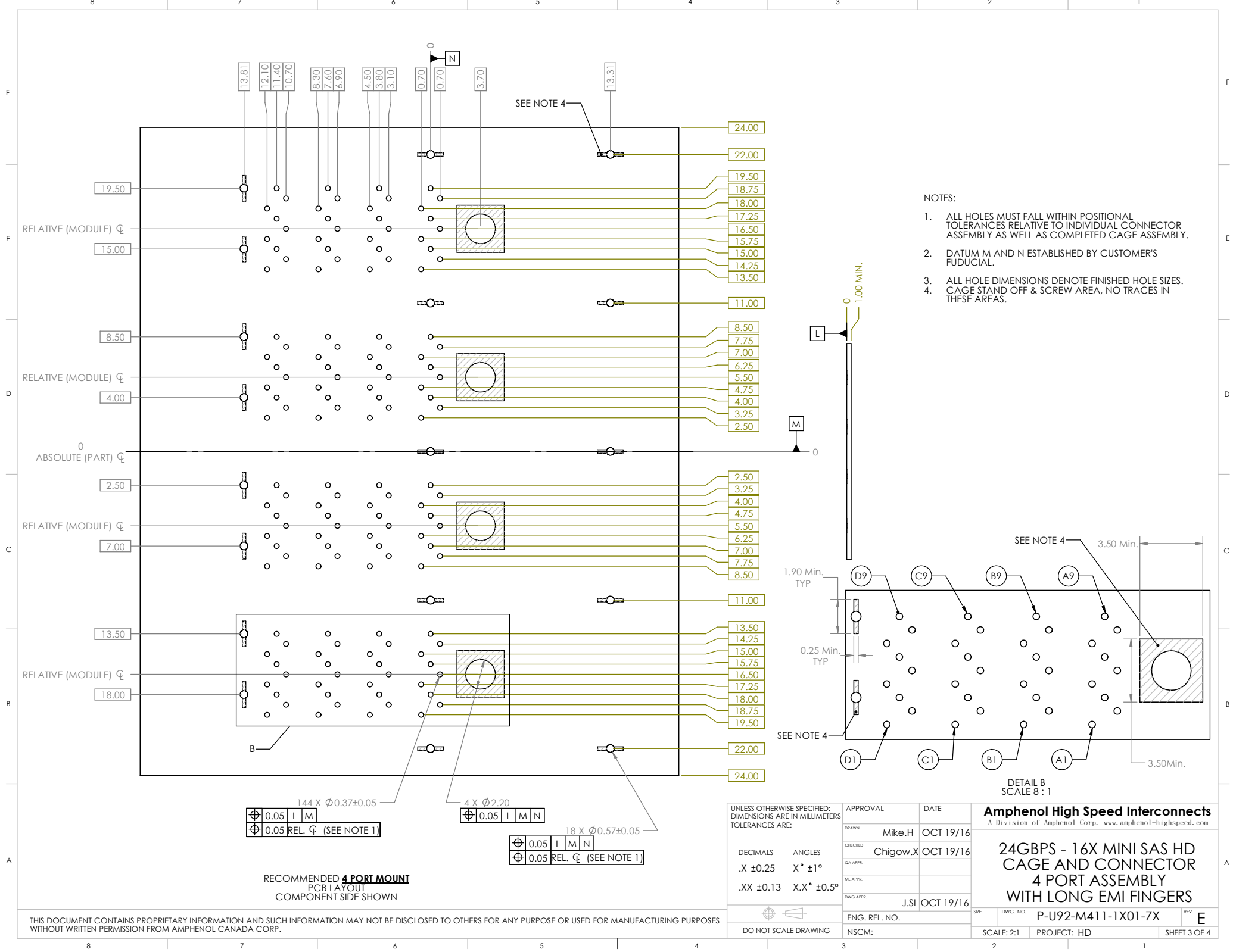
INK MARKING INFO:
FOUR (4) DIGIT DATE CODE
AND PART NUMBER



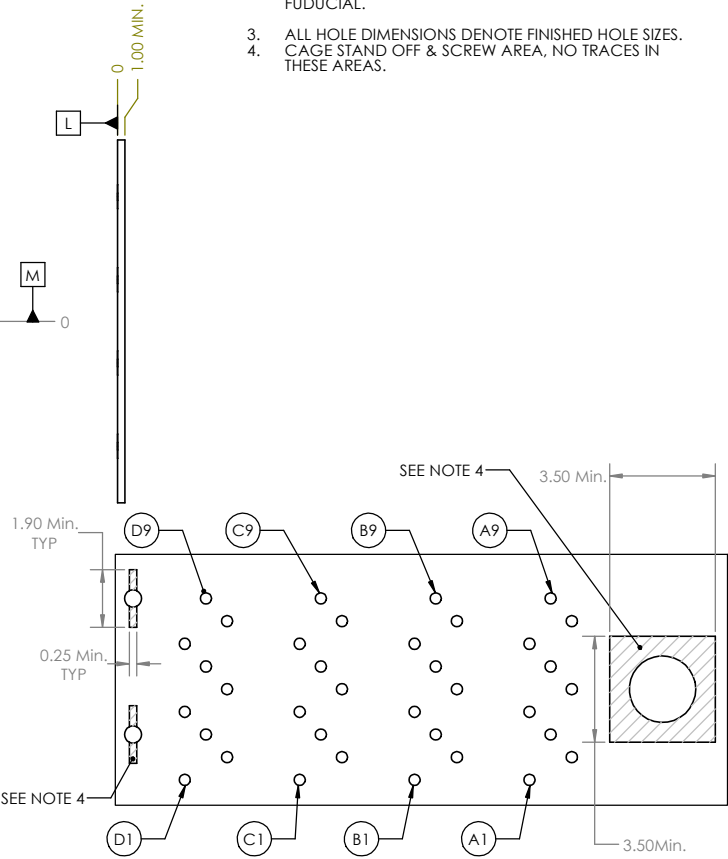
DETAIL A
SCALE 6:1



UNLESS OTHERWISE SPECIFIED: DIMENSIONS ARE IN MILLIMETERS TOLERANCES ARE:		APPROVAL	DATE	Amphenol High Speed Interconnects A Division of Amphenol Corp. www.amphenol-highspeed.com 24GBPS - 16X MINI SAS HD CAGE AND CONNECTOR 4 PORT ASSEMBLY WITH LONG EMI FINGERS	
DRAWN		Mike.H	OCT 19/16		
CHECKED		Chigow.X	OCT 19/16		
QA APPR.					
ME APPR.					
DWG APPR.		J.SI	OCT 19/16		
DECIMALS ANGLES .X ±0.25 X° ±1° .XX ±0.13 X.X° ±0.5°		ENG. REL. NO.		SIZE	DWG. NO.
DO NOT SCALE DRAWING		NSCM:		SCALE: 2:1	PROJECT: HD
				P-U92-M411-1X01-7X	REV E
				SHEET 2 OF 4	



- NOTES:
- 1. ALL HOLES MUST FALL WITHIN POSITIONAL TOLERANCES RELATIVE TO INDIVIDUAL CONNECTOR ASSEMBLY AS WELL AS COMPLETED CAGE ASSEMBLY.
 - 2. DATUM M AND N ESTABLISHED BY CUSTOMER'S FUDUCIAL.
 - 3. ALL HOLE DIMENSIONS DENOTE FINISHED HOLE SIZES.
 - 4. CAGE STAND OFF & SCREW AREA, NO TRACES IN THESE AREAS.



144 X $\phi 0.37 \pm 0.05$

4 X $\phi 2.20$

18 X $\phi 0.57 \pm 0.05$

$\phi 0.05$ L M

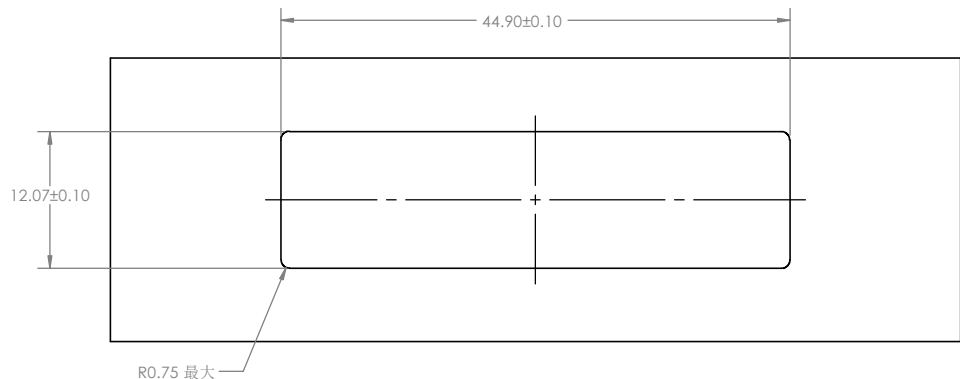
$\phi 0.05$ REL. ϕ (SEE NOTE 1)

$\phi 0.05$ L M N

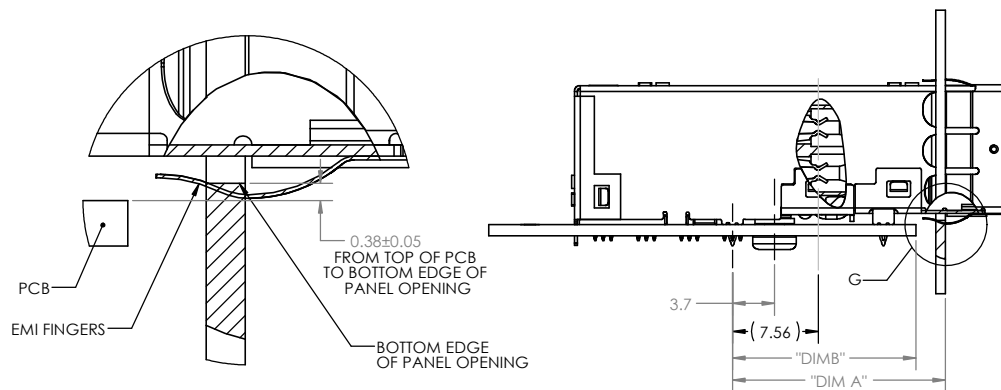
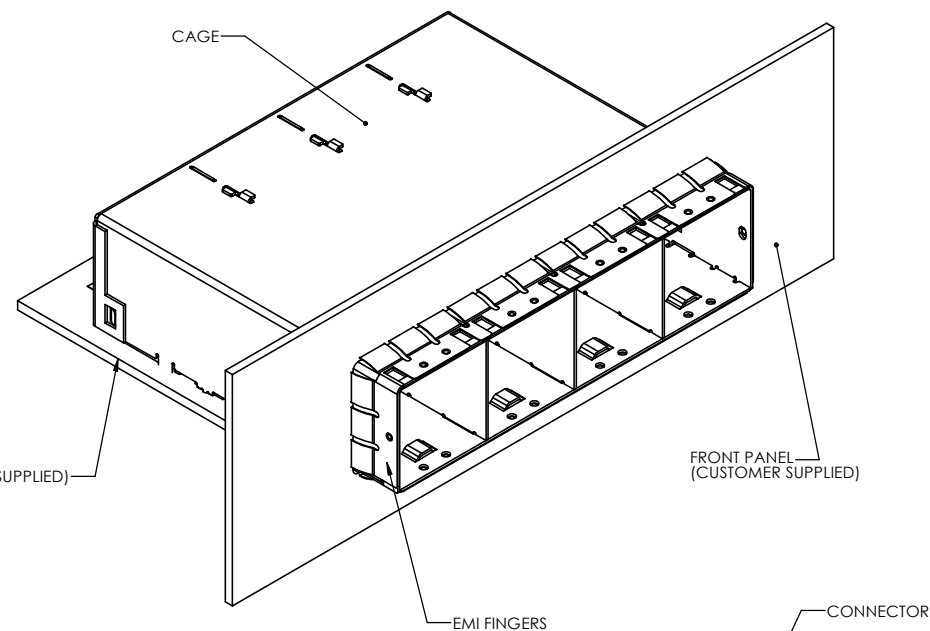
$\phi 0.05$ REL. ϕ (SEE NOTE 1)

RECOMMENDED 4 PORT MOUNT
PCB LAYOUT
COMPONENT SIDE SHOWN

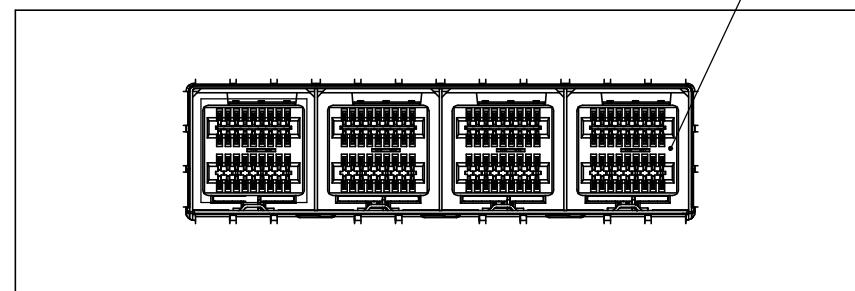
UNLESS OTHERWISE SPECIFIED: DIMENSIONS ARE IN MILLIMETERS TOLERANCES ARE:		APPROVAL	DATE	Amphenol High Speed Interconnects A Division of Amphenol Corp. www.amphenol-highspeed.com 24GBPS - 16X MINI SAS HD CAGE AND CONNECTOR 4 PORT ASSEMBLY WITH LONG EMI FINGERS	
DECIMALS	ANGLES	DRAWN			
.X ± 0.25	X° $\pm 1^\circ$	Mike.H	OCT 19/16		
.XX ± 0.13	X.X° $\pm 0.5^\circ$	Chegow.X	OCT 19/16		
		QA APPR.			
		ME APPR.			
		DWG APPR.	J.SI OCT 19/16	SIZE	DWG. NO.
		ENG. REL. NO.			
		NSCM:		SCALE: 2:1	PROJECT: HD
					SHEET 3 OF 4



RECOMMENDED PANEL CUTOUT
FOR **SINGLE LEVEL** MOUNTING



DETAIL G
SCALE 12 : 1



APPLICATION	DIM A	DIM B
OTHER M/B BRACKET	20.08	18.19
PCI BRACKET	19.00	17.10

UNLESS OTHERWISE SPECIFIED:
DIMENSIONS ARE IN MILLIMETERS
TOLERANCES ARE:

DECIMALS ANGLES
.X ±0.25 X° ±1°
.XX ±0.13 X.X° ±0.5°



DO NOT SCALE DRAWING

APPROVAL	DATE
DRAWN: Mike.H	OCT 19/16
CHECKED: Chigow.X	OCT 19/16
QA APPR:	
ME APPR:	
DWG APPR: J.SI	OCT 19/16
ENG. REL. NO.	
NSCM:	

Amphenol High Speed Interconnects
A Division of Amphenol Corp. www.amphenol-highspeed.com

**24GBPS - 16X MINI SAS HD
CAGE AND CONNECTOR
4 PORT ASSEMBLY
WITH LONG EMI FINGERS**

SIZE	DWG. NO.	REV
P-U92-M411-1X01-7X	E	
SCALE: 1:1	PROJECT: HD	SHEET 4 OF 4

Mouser Electronics

Authorized Distributor

Click to View Pricing, Inventory, Delivery & Lifecycle Information:

[Amphenol:](#)

[U92M411100170](#)