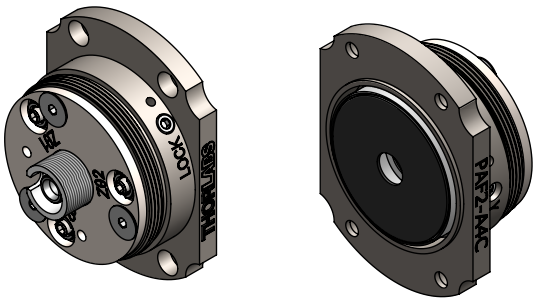
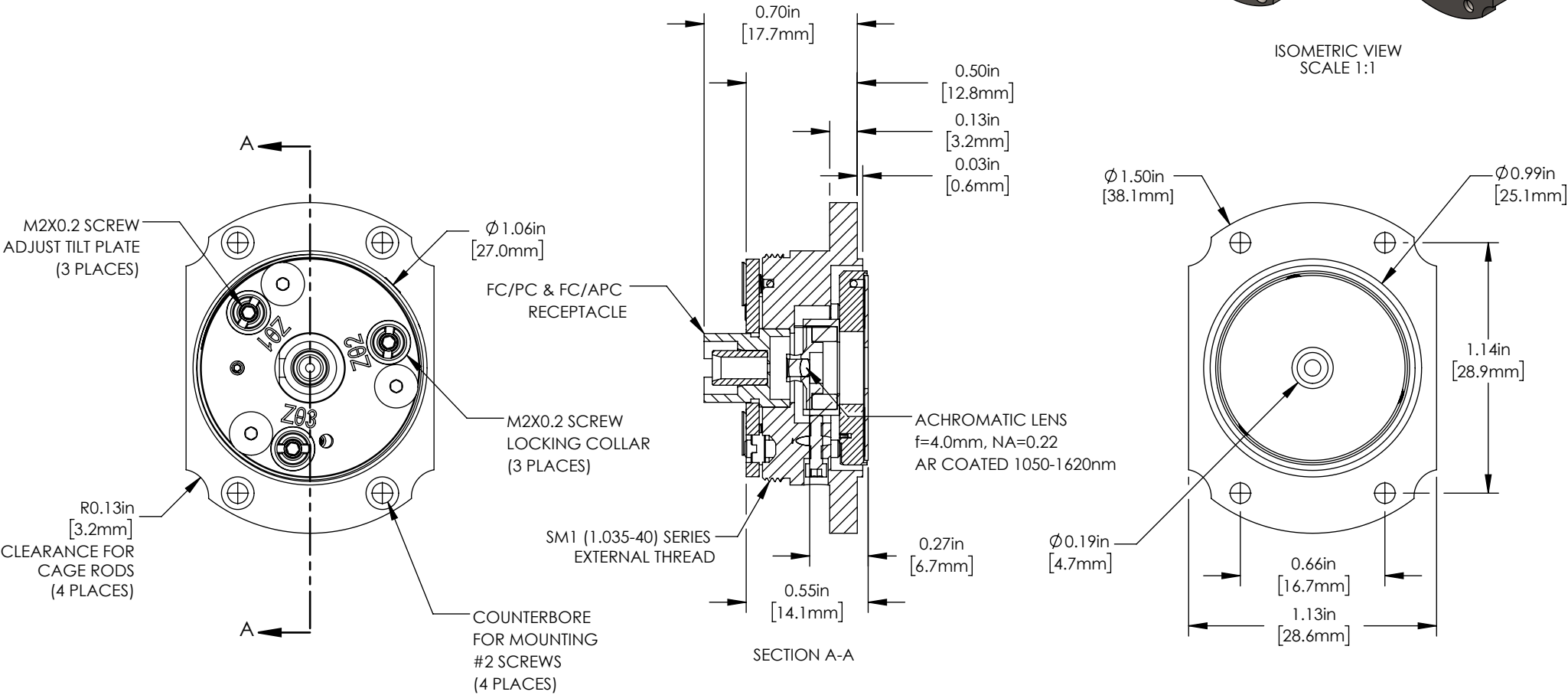


SPECIFICATIONS				
INPUT MFD FROM SMF-28-J9 FIBER*	OUTPUT 1/e <sup>2</sup> WAIST DIAMETER*	MAX WAIST DISTANCE*	DIVERGENCE*	LENS CLEAR APERTURE
10.4 μm	0.76 mm	150 mm	2.600 mrad	1.8 mm

\*CALCULATED USING 1550nm WAVELENGTH




ISOMETRIC VIEW  
SCALE 1:1



NOTES:  
FIBERPORT IS FACTORY ALIGNED FOR APPROX. COLLIMATION AT 1310nm.

- INCLUDED BUT NOT SHOWN:
- DUST CAP
  - 0.028" HEX KEY
  - 0.050" HEX KEY
  - 0-80 LOCKING SCREW
  - SPW403 SPANNER FOR LOCKING COLLARS

FOR INFORMATION ONLY  
NOT FOR MANUFACTURING PURPOSES

DRAWING PROJECTION			 www.thorlabs.com	
	NAME	DATE		
DRAWN	JB	09/08/17	FIBERPORT, FC/PC & APC, f=4.0 mm, 1050 - 1620 nm, Ø0.76 mm WAIST	
APPROVAL	PH	02/14/20	MATERIAL	
COPYRIGHT © 2020 BY THORLABS			N/A	
VALUES IN PARENTHESIS ARE CALCULATED AND MAY CONTAIN ROUND OFF ERRORS			ITEM #	APPROX WEIGHT
			PAF2-A4C	0.09 kg