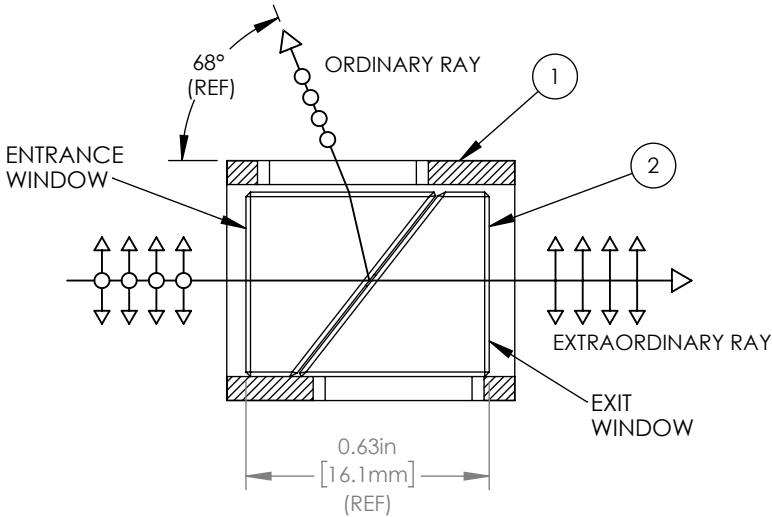
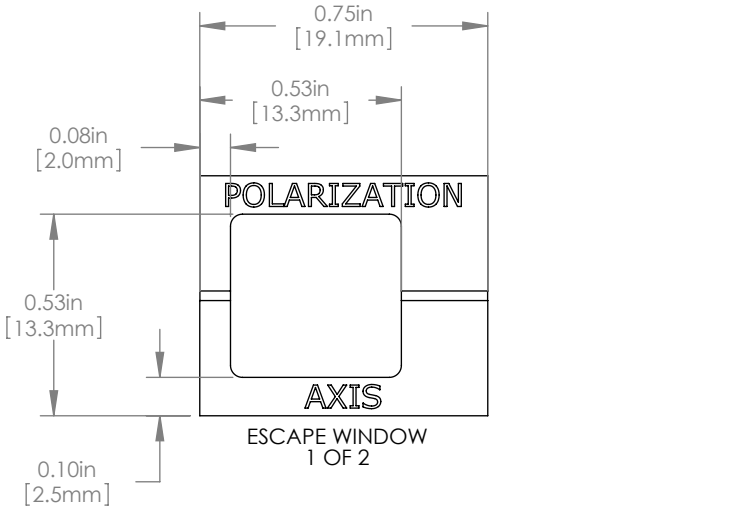
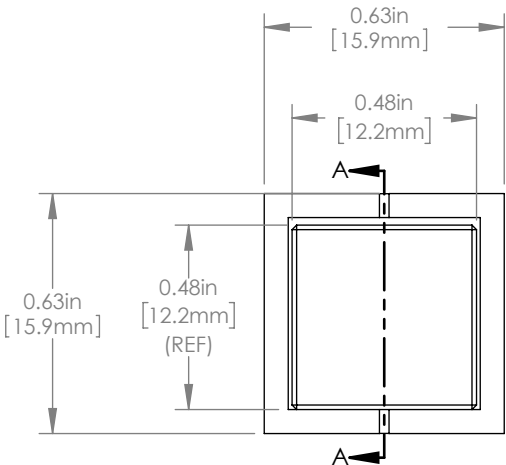


	ITEM	MATERIAL
①	MECHANICAL HOUSING	6061-T6 ALUMINUM
②	POLARIZER	LASER QUALITY NATURAL CALCITE

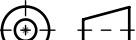


NOTES/SPECIFICATIONS:

- EXTINCTION RATIO: 100,000:1
- ENTRANCE/EXIT WINDOWS:
SURFACE QUALITY: 20-10 SCRATCH-DIG
SURFACE FLATNESS: $\lambda/4$ @ 633 nm
- ESCAPE WINDOWS:
SURFACE QUALITY: 80-50 SCRATCH-DIG
- CLEAR APERTURE: \varnothing 10.0 mm
- ACCEPTANCE ANGLE: $\pm 1.6^\circ$ REF
- BEAM DEVIATION: < 3 arc min.
- BBAR COATING: $R_{avg} < 1\%$ FOR 350-700 nm
- COATED SURFACES: ENTRANCE AND EXIT WINDOWS

CLEANING INSTRUCTIONS: WARNING ATTEMPTED CLEANING OF THE ESCAPE WINDOW COULD RESULT IN DAMAGE TO THE OPTIC. CALCITE IS EASILY DAMAGED IF NOT CLEANED PROPERLY. THIS IS PARTICULARLY TRUE FOR THE ESCAPE WINDOWS. IF IT BECOMES NECESSARY TO CLEAN THE OPTICAL SURFACES, FIRST BLOW ANY DEBRIS OFF THE SURFACE WITH A GENTLE STREAM OF COMPRESSED AIR. THEN, ROLL THE TIP OF AN OPTIC TISSUE INTO A POINT, WET IT WITH PROPANOL, AND GENTLY WIPE THE SURFACE FROM THE CENTER TO THE EDGE.

FOR INFORMATION ONLY
NOT FOR MANUFACTURING PURPOSES

DRAWING PROJECTION					THORLABS www.thorlabs.com	
	NAME	DATE	GLAN TAYLOR POLARIZER			
DRAWN	BAG	05/FEB/07	BBAR: 350-700 nm CA: 10.0 mm			
APPROVAL	MG	06/APR/23	MATERIAL			REV D
COPYRIGHT © 2023 BY THORLABS			SEE TABLE			
VALUES IN PARENTHESIS ARE CALCULATED AND MAY CONTAIN ROUND OFF ERRORS			ITEM #		APPROX WEIGHT	
			GT10-A		10 g	