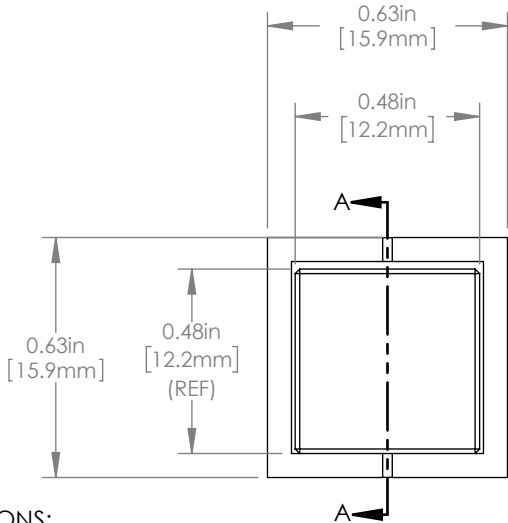


	ITEM	MATERIAL
①	MECHANICAL HOUSING	6061-T6 ALUMINUM
②	POLARIZER	LASER QUALITY NATURAL CALCITE

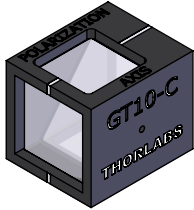
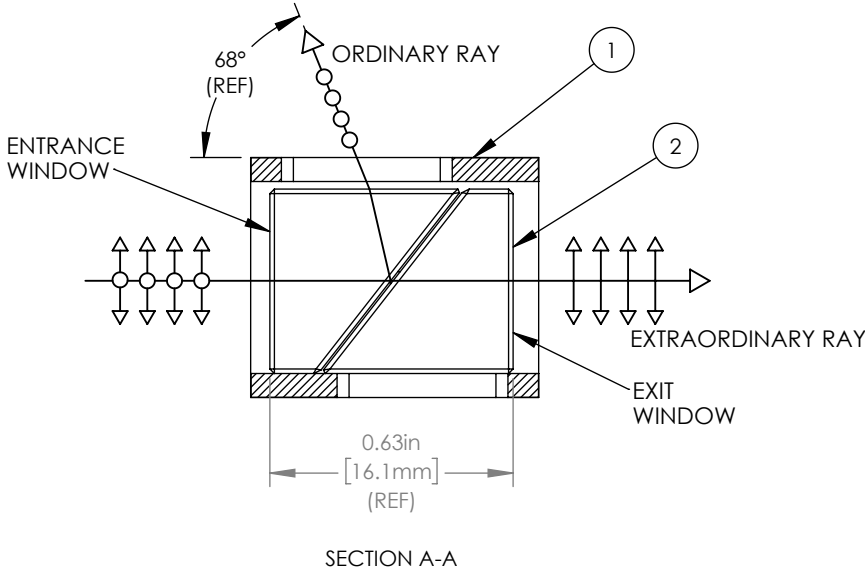
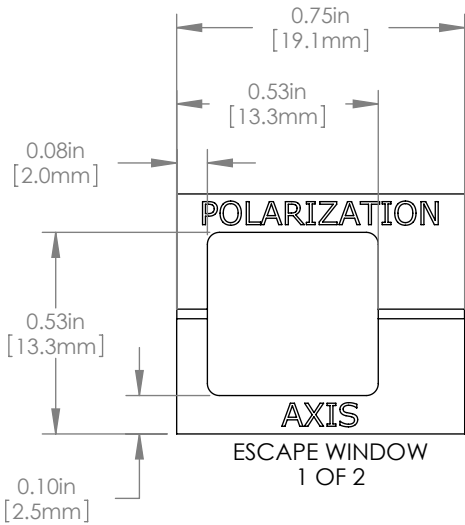



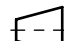
NOTES/SPECIFICATIONS:

- EXTINCTION RATIO: 100,000:1
- ENTRANCE/EXIT WINDOWS:
SURFACE QUALITY: 20-10 SCRATCH-DIG
SURFACE FLATNESS: $\lambda/4$ @ 633 nm
- ESCAPE WINDOWS:
SURFACE QUALITY: 80-50 SCRATCH-DIG
- CLEAR APERTURE: $\varnothing 10.0$ mm
- ACCEPTANCE ANGLE: $\pm 1.6^\circ$ REF
- BEAM DEVIATION: < 3 arc min.
- BBAR COATING: $R_{avg} < 1\%$ FOR 1050-1700 nm
- COATED SURFACES: ENTRANCE AND EXIT WINDOWS

CLEANING INSTRUCTIONS: WARNING ATTEMPTED CLEANING OF THE ESCAPE WINDOW COULD RESULT IN DAMAGE TO THE OPTIC. CALCITE IS EASILY DAMAGED IF NOT CLEANED PROPERLY. THIS IS PARTICULARLY TRUE FOR THE ESCAPE WINDOWS. IF IT BECOMES NECESSARY TO CLEAN THE OPTICAL SURFACES, FIRST BLOW ANY DEBRIS OFF THE SURFACE WITH A GENTLE STREAM OF COMPRESSED AIR. THEN, ROLL THE TIP OF AN OPTIC TISSUE INTO A POINT, WET IT WITH PROPANOL, AND GENTLY WIPE THE SURFACE FROM THE CENTER TO THE EDGE.

FOR INFORMATION ONLY
NOT FOR MANUFACTURING PURPOSES



DRAWING PROJECTION				THORLABS www.thorlabs.com	
	NAME	DATE		GLAN TAYLOR POLARIZER	
DRAWN	BAG	05/FEB/07		BBAR: 1050-1700 nm CA: 10.0 mm	
APPROVAL	MG	06/APR/23		MATERIAL	REV E
COPYRIGHT © 2023 BY THORLABS				SEE TABLE	
VALUES IN PARENTHESIS ARE CALCULATED AND MAY CONTAIN ROUNDOFF ERRORS				ITEM #	APPROX WEIGHT
				GT10-C	10 g